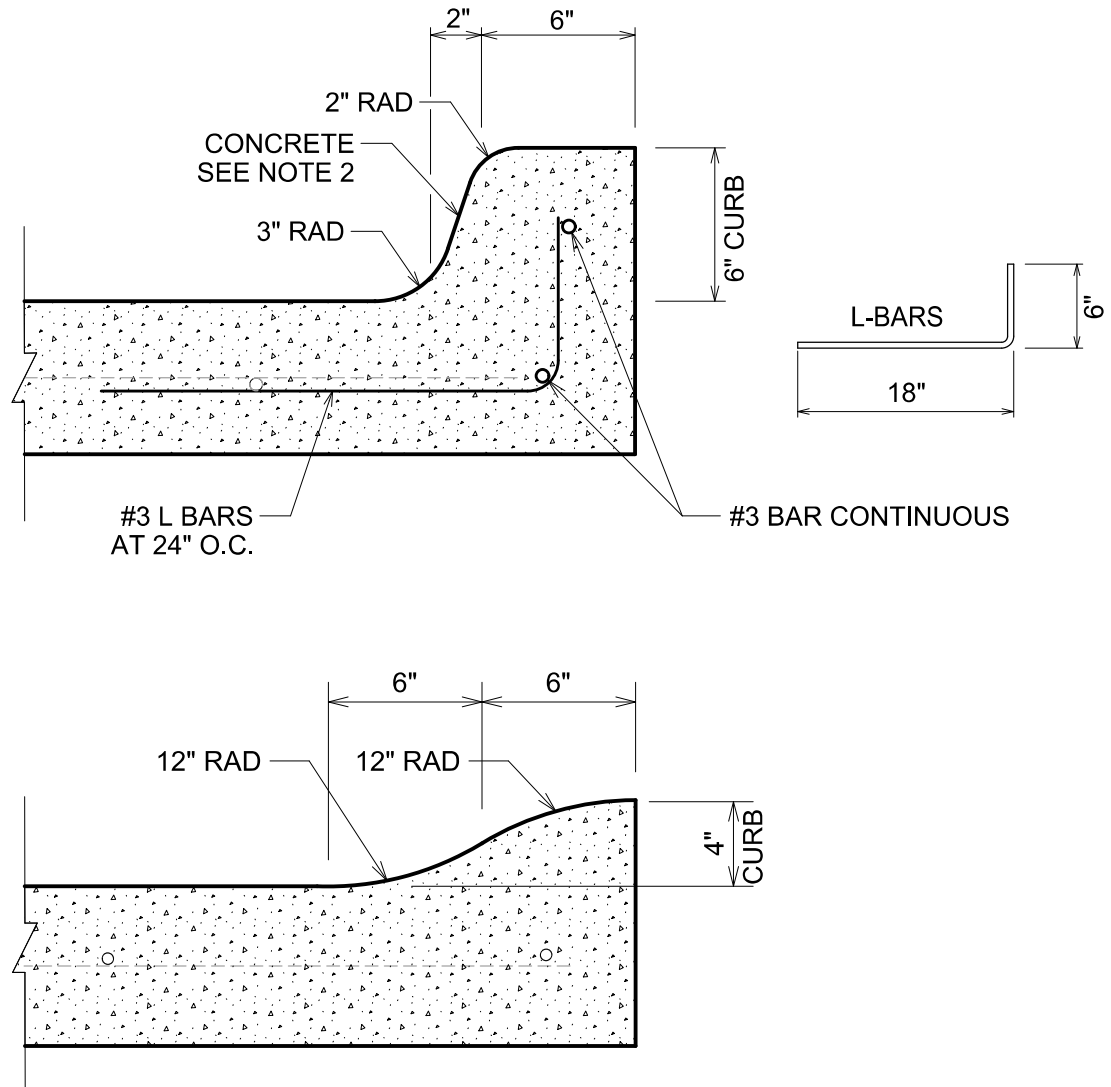


## GENERAL NOTES

1. CURB SHALL BE PLACED MONOLITHICALLY WITH THE ADJACENT CONCRETE OR CONSTRUCTED AS CURB AND GUTTER.
2. CONCRETE SPECIFICATIONS SHALL BE THE SAME AS THOSE FOR THE PAVEMENT.
3. THE COMPLETED CONCRETE CURB SHALL NOT VARY FROM THE SHAPE, DIMENSION AND CONTOUR SHOWN ON THE DETAIL BY MORE THAN 1/2" AT ANY POINT ALONG THE CURB. NON-CONFORMING CURB SHALL BE REMOVED AND REPLACED BY A SAW CUTTING 6" IN FRONT OF THE DEFECTIVE CURB, THEN REMOVING AND REPLACING THE ENTIRE DEPTH OF CURB AND PAVEMENT IN THE DEFECTIVE AREA.
4. EXPANSION JOINTS IN THE PAVEMENT SHALL EXTEND THROUGH ADJACENT CURB WHEN PLACED MONOLITHICALLY WITH ADJACENT CONCRETE.



6" CONCRETE CURB  
&  
4" CONCRETE CURB

STANDARD CONSTRUCTION DETAILS

DATE: 07/20/21

REVISED  
DATE: 07/20/21

PAV - 5